



Complete Range 2020

emco clean-off systems



Designing clean entrances

**emco**



**DIRT**

**MUD**

**SAND**

**MOISTURE**

**DUST**



# OUT!

Did you know that every visitor who enters a building carries an average of 12 g of dirt and moisture with them on their feet, and 80 % of it is redistributed around the building?

# SAVE ON

The real proof lies in the test results: Clean-off zones can hold around 65% of the dirt and up to 90% of the moisture (thus saving 90% of the cleaning time and costs). With less frequent cleaning cycles and reduced use of cleaning agents, a clean-off zone could pay for itself in a matter of months.



# CLEANING COSTS!



# PRE SERVING

Floor coverings are subject to a steady decline in value as soiling causes damage, e.g. scratches, stains, dulling of glossy surfaces. Textile coverings also have a tendency to lose their colour intensity, dirt-repelling material properties can become less effective, etc. The floor covering beyond the clean-off zone preserves its value for longer and retains a well-kept, distinguished appearance.



# VALUE

# PRE VENTING

The German professional association for health and welfare (BGW) reports: „Most accidents occur on the floor. These accidents involve tripping, slipping and falling, and many of them are caused by slippery and dirty floor coverings or trip hazards.“ Many floors turn into an ice rink when they are wet. The BGW therefore explicitly recommends clean-off zones in entrance areas.

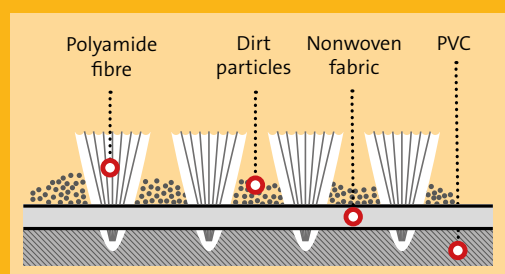




# ACCIDENTS

# CLEAN OFF

It is difficult to protect your flooring when soil, dust and moisture are carried into the building on the soles of people's shoes. However a new clean-off mat helps combat this, because a clean-off can brush off the dirt and absorb moisture before it is distributed across the rest of the building.





IN!



# Contents

## Clean-off



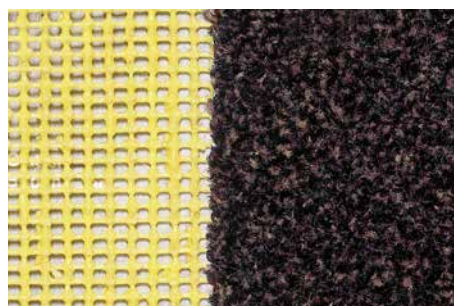
INNOVA	13
MAXIMUS®	14 – 15
PRESTIGE	16
CONFORM	17
PREMIUM	18
CARE	19
FOCUS	20
SCRATCH	21
CONTURA	22

## Design Clean-off



MAXIMUS® IMAGE	24
IMAGE INDOOR	25
IMAGE OUTDOOR	26

## Accessories



Non-Slip underlay	23
Adjustment mat	23
Edge profile	23
Technical Data	27

## References



Application areas	28 – 29
References	30 – 37

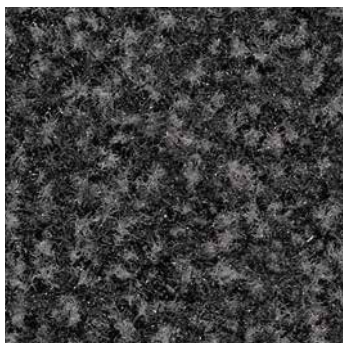
## Service

Cleaning and maintenance recommendations	38
Laying instructions	39



# INNOVA

An innovative, high-quality clean-off which can be adapted to suit any technical or design-related requirements and which reduces dirt consistently. Not only does it look good, it provides other benefits too – for example, it improves the acoustics in the room.



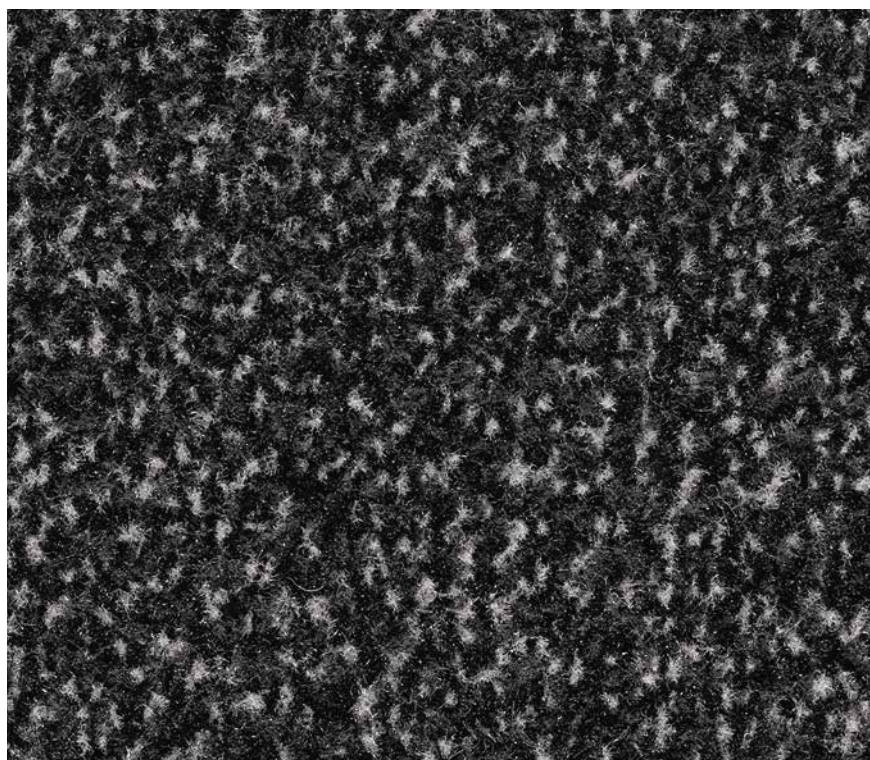
36.03 Grey



36.10 Slate



36.01 Black



36.02 Anthracite

Rolls (including border) approx.  
100, 150 and 200 cm wide

Mats (including border) approx.  
60 x 90 cm  
90 x 150 cm  
130 x 200 cm  
200 x 300 cm

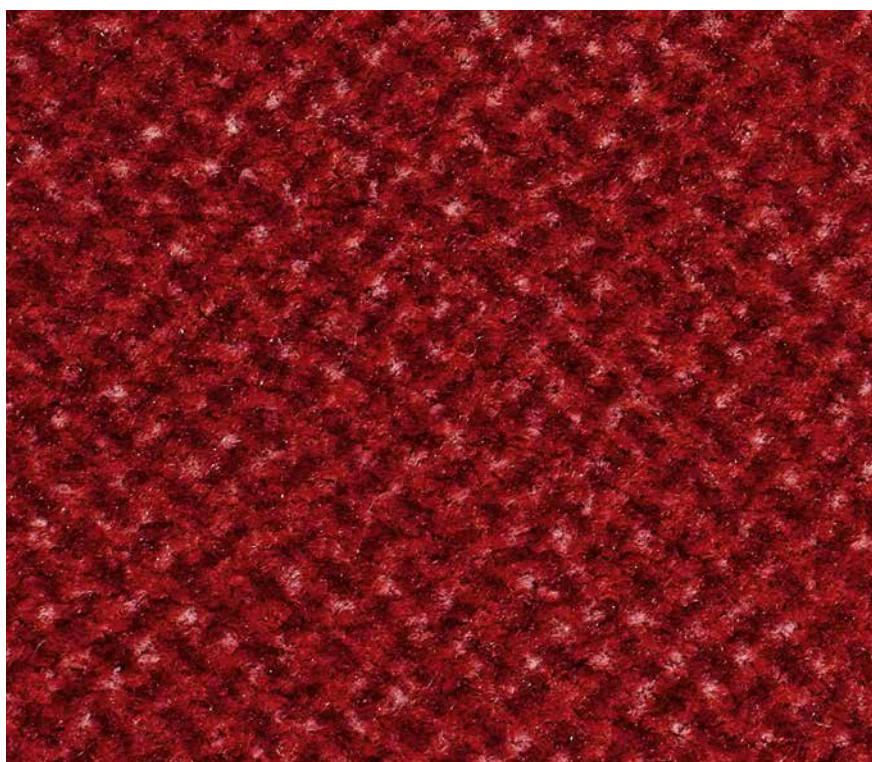
# MAXIMUS®

The benchmark for the highest standards of comfort. High-quality tufted velour and a sophisticated look combined with excellent protective properties. Available in three attractive versions for first-rate designs.

## MAXIMUS® AMBIENTE

Rolls (including border)  
approx.  
130 and 200 cm wide

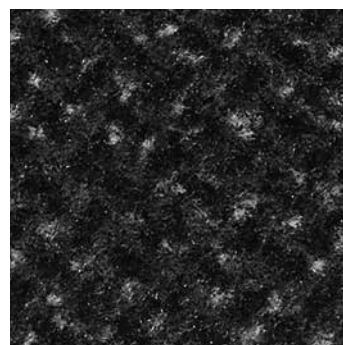
Mats (including border)  
approx.  
60 x 90 cm  
90 x 150 cm  
130 x 200 cm



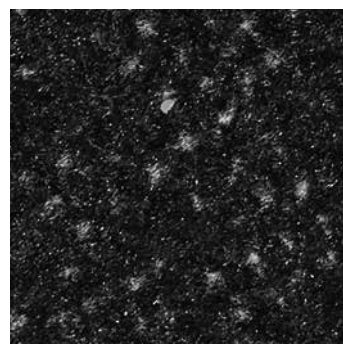
82.07 Red Ambiente



82.03 Grey Ambiente



82.02 Anthracite Ambiente



82.01 Black Ambiente



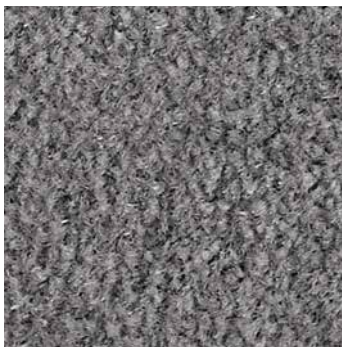
# MAXIMUS® SINGLE



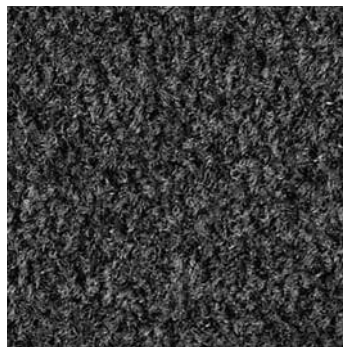
80.07 Red



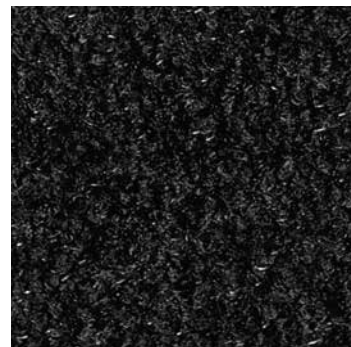
80.04 Brown



80.03 Grey



80.02 Anthracite



80.01 Black

# MAXIMUS® MOTTLED



81.02 Anthracite mottled



81.01 Black mottled



81.04 Brown mottled

# PRESTIGE

A high-quality product sold in roll format in five timeless colours for all critical areas which are prone to soiling. Ideal for use wherever people come and go frequently in order to prevent the distribution of dirt.



61.02 Grey



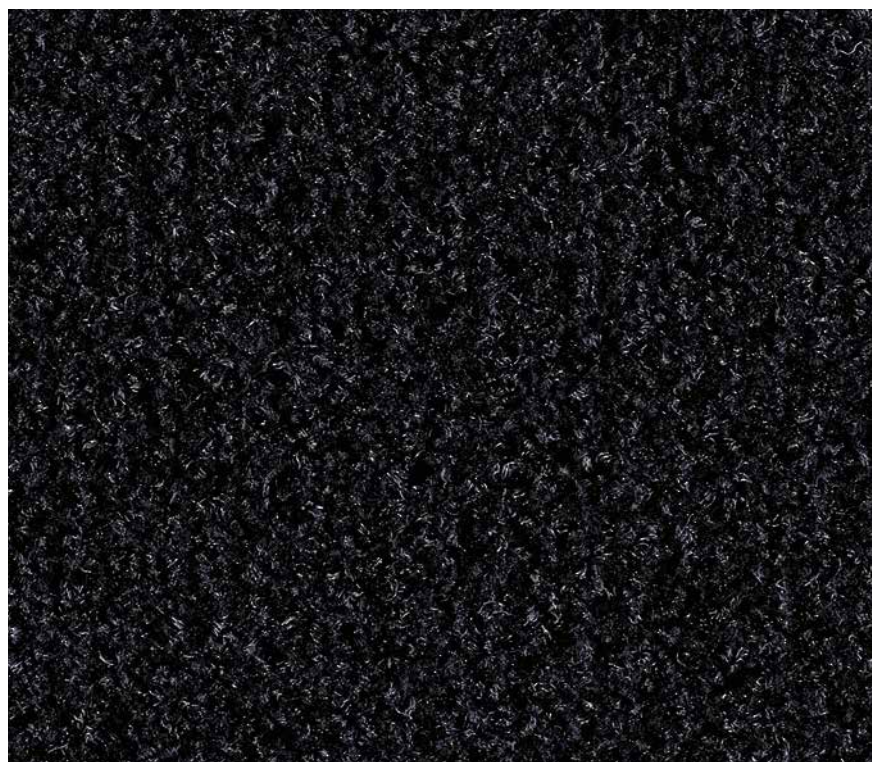
61.03 Brown



61.04 Red



61.05 Blue



61.01 Anthracite

Rolls (including border)  
approx.  
130 and 200 cm wide





76.05 Blue



76.03 Mocha



76.04 Brown



76.01 Anthracite

# CONFORM

This clean-off is made from exclusive velour and is perfectly coordinated with the appearance of sophisticated wood and designer floors. The ECONYL yarn is made from recycled materials. The tiles come under fire classification Bfl-s1.

Made with 100% Regenerated Nylon

**ECONYL®**



76.02 Beige

Rolls (including border) approx.  
130 and 200 cm wide

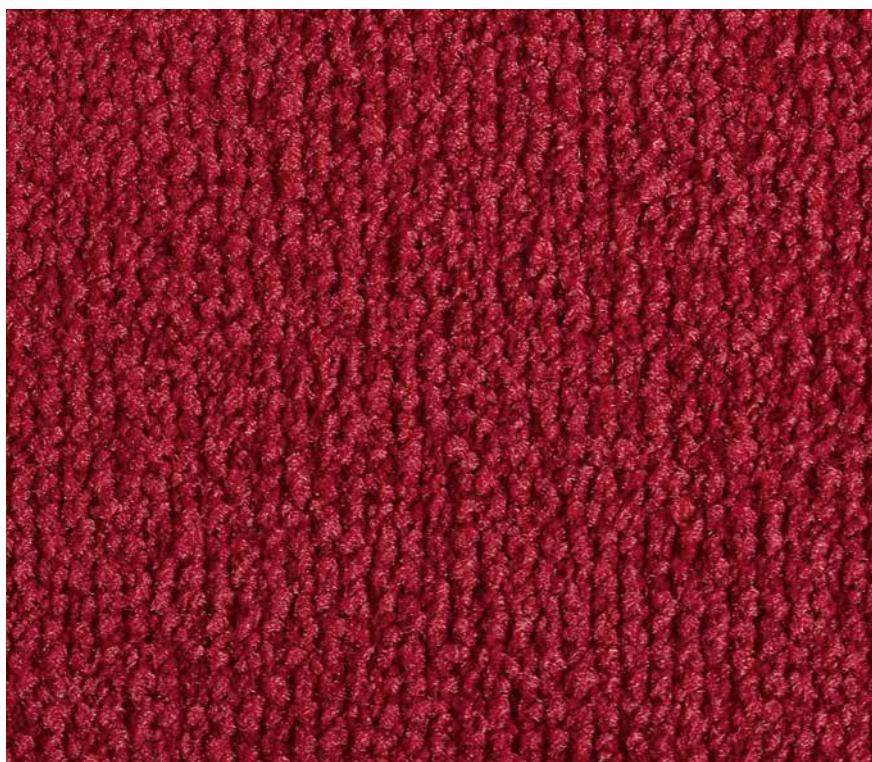
Mats (including border) approx.  
60 x 90 cm  
90 x 150 cm  
130 x 200 cm

Tiles (no border) approx. 50 x 50 cm  
(with bitumen coating)

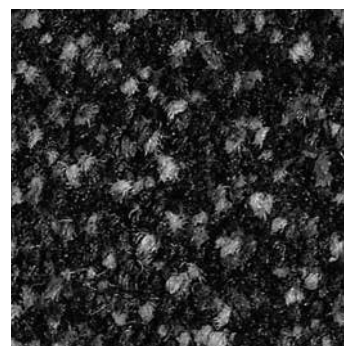
CONFORM SE  
Rolls (no border) approx.  
400 cm wide

# PREMIUM

A clean-off that meets the highest standards. Distinguished in appearance, strong in material and function. High-quality tufted velour with specially developed fibre and special dirt-concealing properties.



75.12 Red



75.15 Slate



75.11 Black

Rolls (including border)  
approx. 200 cm wide





47.04 Beige



47.03 Brown



47.02 Grey

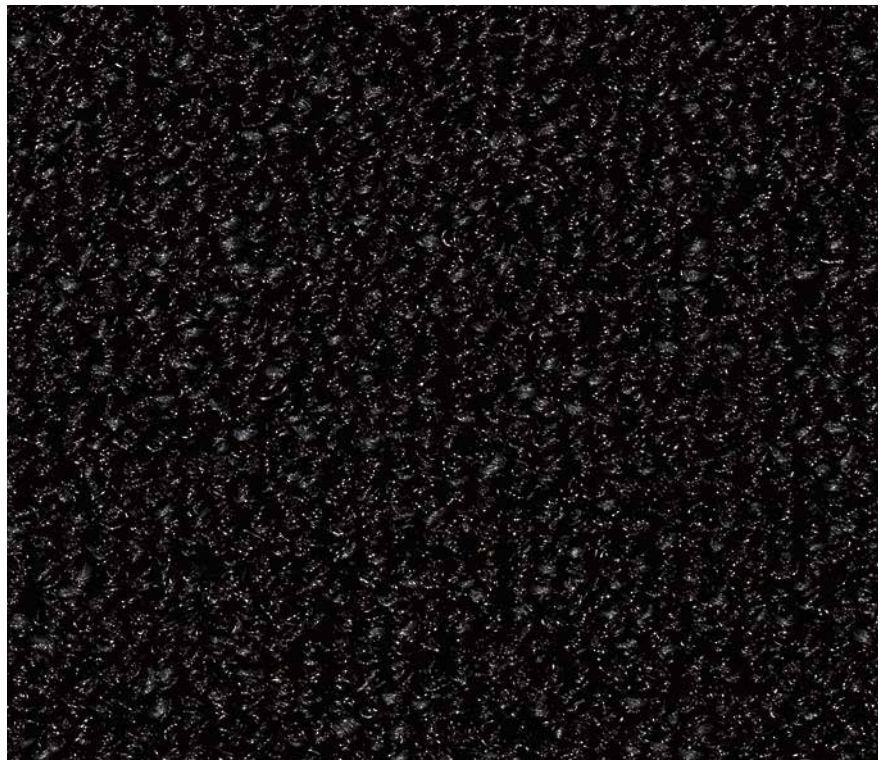


47.05 Blue

Rolls (including border)  
approx. 200 cm wide

# CARE

Provides effective, long-lasting protection for all high-quality floor coverings beyond the clean-off zone. An extremely robust and durable product which is sold in roll format. For a systematic and effective reduction in dirt.

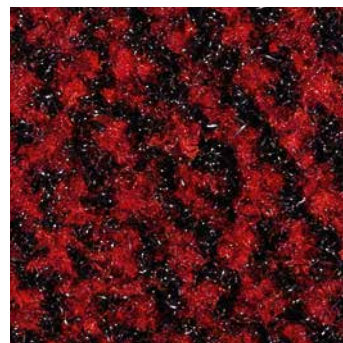


47.01 Anthracite



# FOCUS

Creates an impressive effect and offers excellent durability – perfect for high traffic areas. Dual-fibre cleaning structure with strong-filament and fine-filament fibres.



25.04 Red



25.03 Brown



25.01 Anthracite



25.02 Grey

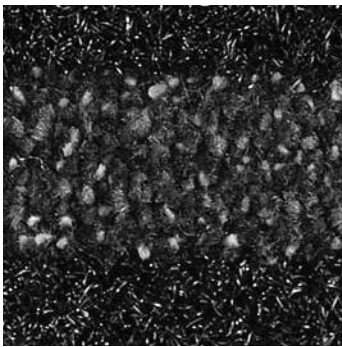
Rolls (including border)  
approx.  
130 and 200 cm wide

Mats (including border)  
approx.  
60 x 90 cm  
90 x 150 cm  
130 x 200 cm  
200 x 300 cm

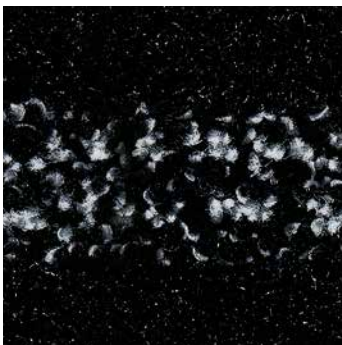


# SCRATCH

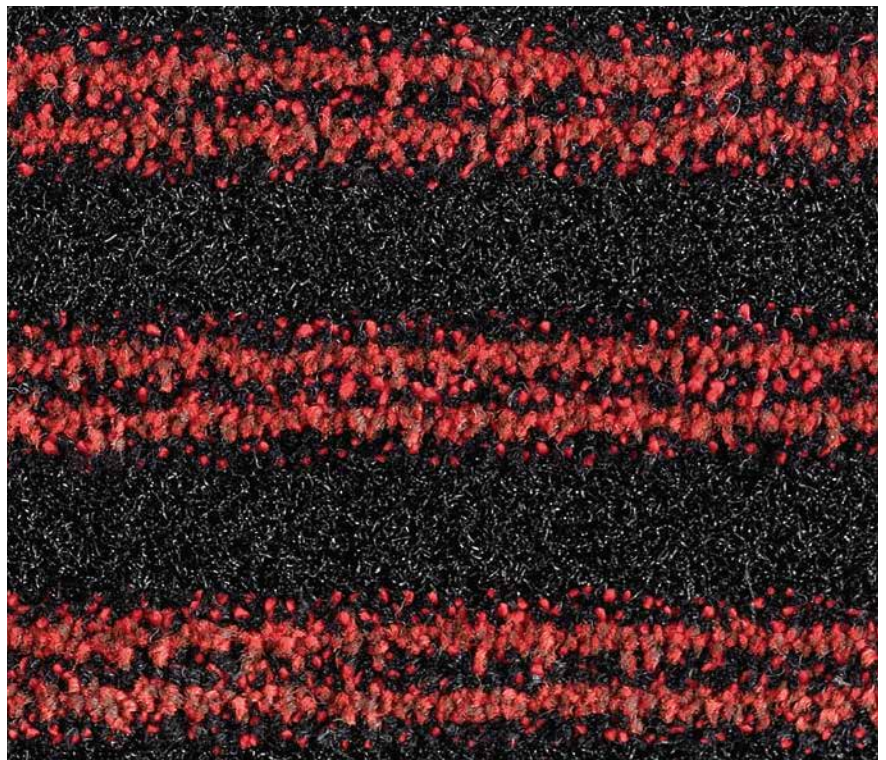
The dual-function clean-off: brushes off coarse dirt and absorbs moisture. Optimal combination of materials, eye-catching design. Ideal for all application areas where visitors come and go frequently.



40.01 Anthracite



40.05 Grey



40.04 Red

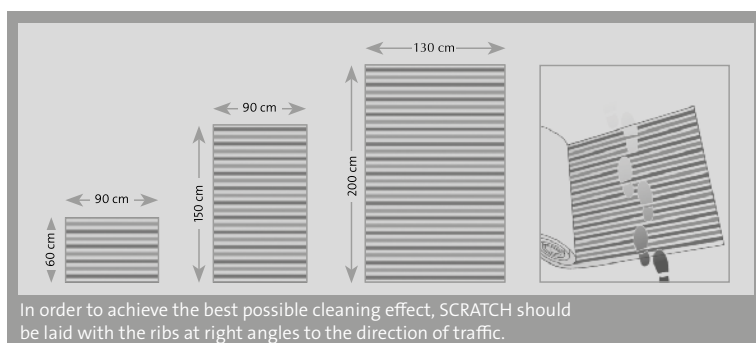
Rolls (including border)  
approx.  
200 cm wide

Mats (including border)  
approx.

60 x 90 cm

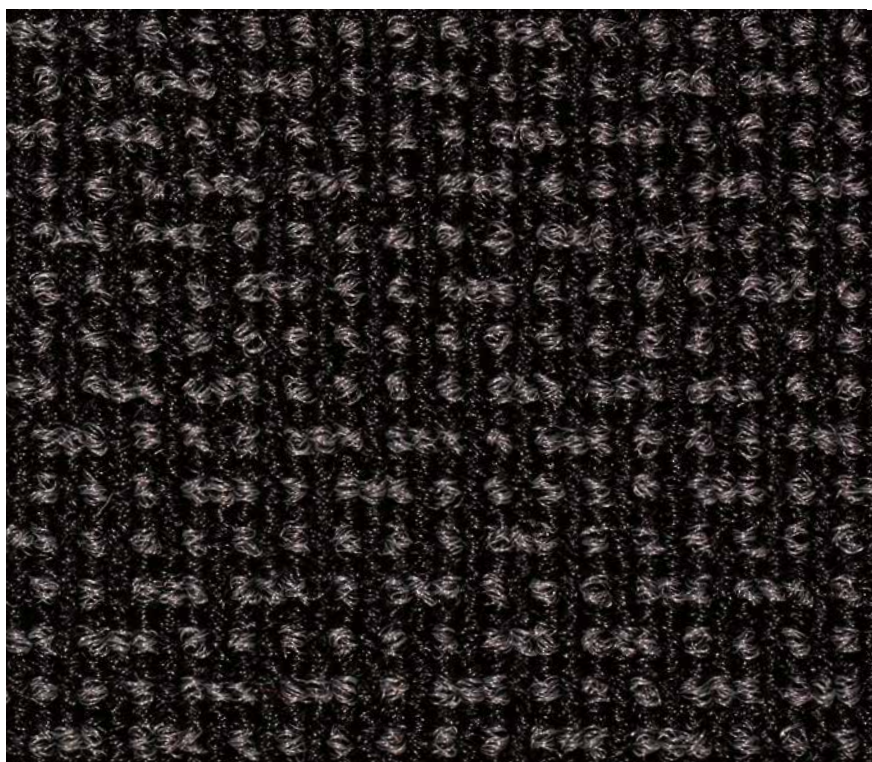
90 x 150 cm

130 x 200 cm



# CONTURA

Sophisticated clean-off with four eye-catching designs for a special surface effect. Equally attractive as a roll to cover an entire room or as a runner to create striking design highlights within a space. The dark appearance and strong textures create a distinctive impression.



17.01 Diamonds



17.02 Cross



17.04 Diamonds-cut



17.03 Diagonal

Rolls (no border) approx.  
200 cm wide



# Accessories

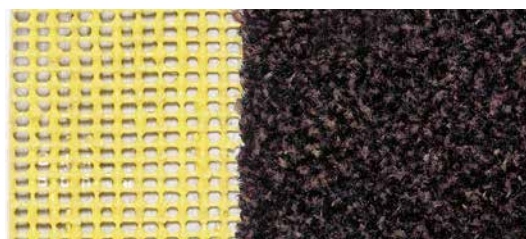
## FLOCK non-slip underlay



Non-slip underlayment for clean-off zones on textile floors

Colour:	Anthracite
Type:	Rolls
Width:	80 cm, 120 cm, 180 cm
Thickness:	2.5 to 3 mm
Weight:	approx. 750 g/m <sup>2</sup>

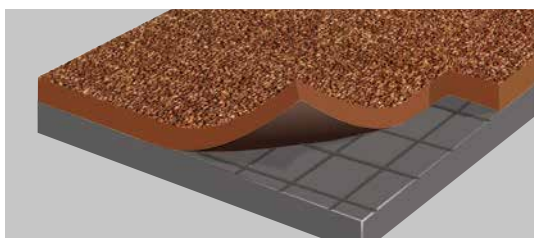
## EXACT\* non-slip underlay



Non-slip underlayment for clean-off zones on smooth floors

Colour:	Yellow
Type:	Rolls
Width:	80 cm, 120 cm, 180 cm
Thickness:	2 mm
Weight:	approx. 450 g/m <sup>2</sup>

## Adjustment mat

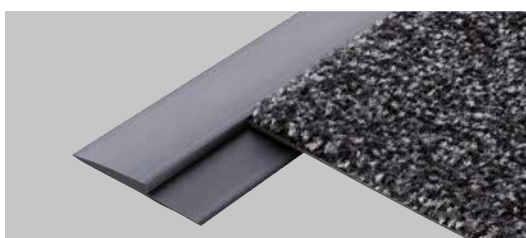


To compensate for wells in entrance areas

Example for a frame approx. 22 mm deep:  
compensation of the adjustment mat approx.  
14 mm + clean-off approx. 10 mm.

Rolls: approx. 125 cm wide  
Specially cut mats.

## Edge profile



Border profile for finishing the cut edges in the case of products with a heavy-duty PVC coating

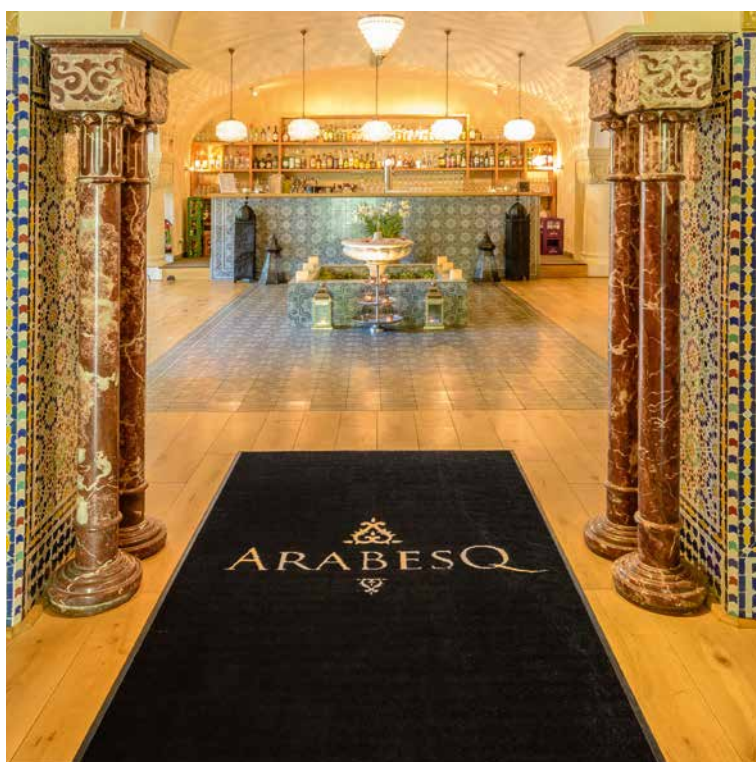
Rolls: 25 linear metres

\* For vinyl coverings, we recommend using the EXACT non-slip underlay to prevent plasticiser migration.

# MAXIMUS® IMAGE

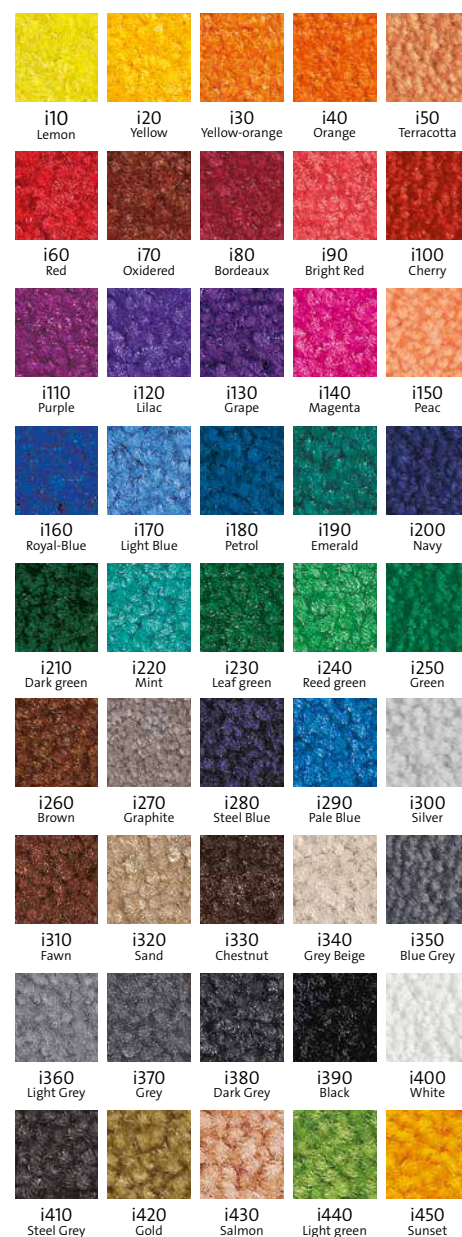
## We can print your clean-off with a bespoke design

The Chromojet printing technology can effortlessly reproduce most logos, images and text templates on our product MAXIMUS® IMAGE. Each mat can be printed with up to 16 colours (including the basic mat colour), which can be chosen from our palette of 45 standard colours. Special colours based on the Pantone, RAL or HKS colour standards are also available for an additional charge.



MAXIMUS® IMAGE

MAXIMUS® IMAGE combines MAXIMUS® quality with all the benefits of individual design. Our precise dyeing techniques create characters, fonts and graphic elements with impressive accuracy. Even contours, shading and colour gradients can be recreated with very few restrictions.



## Just the way you want

As an advertising medium, with a logo or picture elements, for information, with lettering or text, in your own colour design ...

Maximum print size approx.  
200 cm (including border).  
Special shapes possible.



# IMAGE INDOOR

## Unlimited design freedom for interiors

A colour-fast calling card for your premises! With all the advantages of genuine quality: value preservation, cost-effectiveness and increased safety, custom-made to your specifications. Additional benefit: you can even put the mat in the washing machine if necessary – it is washable up to 60°C without any risk of colour changes (in accordance with DIN 54006). Each mat can be printed with up to 32 colours (including the basic mat colour), which can be chosen from our palette of 45 standard colours.

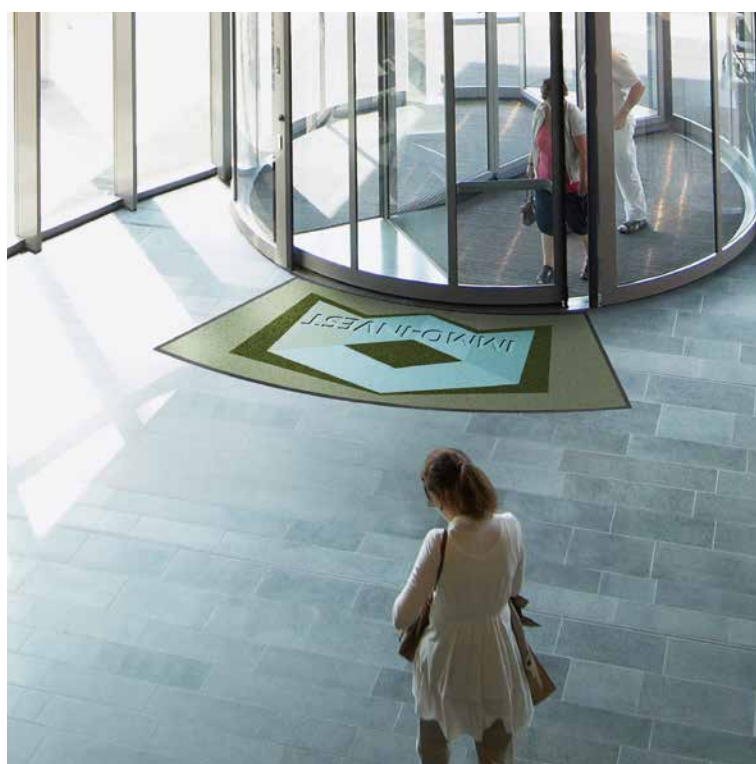
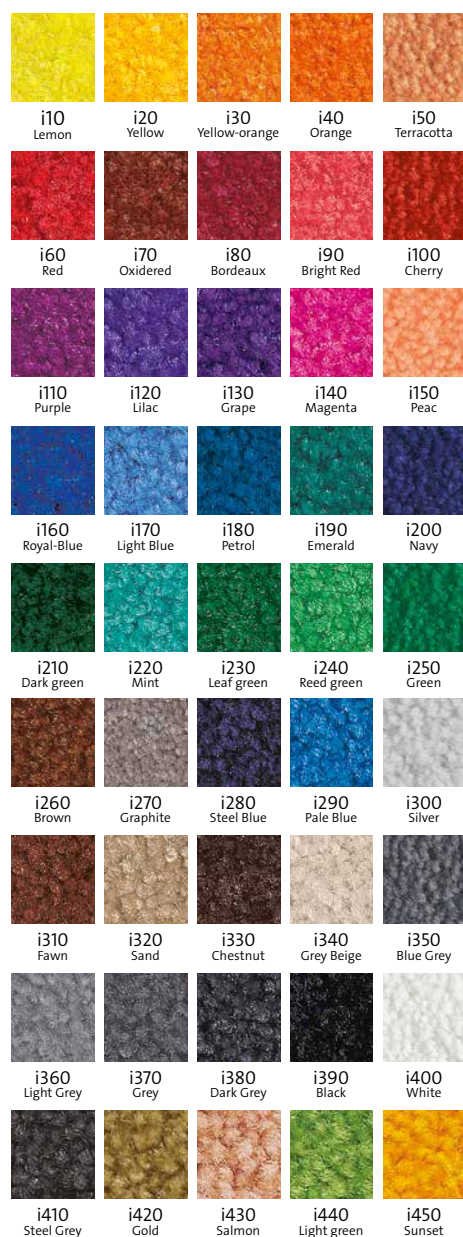


IMAGE INDOOR is machine-washable up to 60°C

## Note: MAXIMUS® IMAGE and IMAGE INDOOR

### Dimensions:

- In general, the dimensions should be understood to include the circumferential edge

### Cut-outs/borders:

- If mats are used where there are existing cutouts/borders, the internal dimensions of the border should be given
- Because of production-related issues resulting in differences in measurements of 3 %, no fixed dimensions are possible
- In manufacturing, 10 cm must be added to the length and width
- Exact cutting to size must take place on site

### Please note:

- The MAXIMUS® IMAGE quality is only suitable for installation internally
- The colour i60 Red is not UV resistant and may therefore fade faster than other colours

Mats (including border) approx.

85 x 60 cm  
85 x 120 cm  
85 x 150 cm  
100 x 180 cm  
130 x 200 cm

Special dimensions on request  
up to approx. 200 x 400\* cm  
(including border)

\* Excess lengths up to approx. 750 cm  
for an additional charge.

# IMAGE OUTDOOR

## The individual logo mat for outside use

A design mat for outside? Certainly, because the materials and workmanship are specifically tailored for use in outdoor areas. Above all, however, IMAGE OUTDOOR gives you the freedom to create your own design. The mats can be printed with logos, slogans, etc. for effective advertising and information provision. The fibres are made of 100 % water-repellent polyamide, and any moisture in the mat is drained away through the fine holes in the backing material.

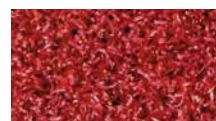


IMAGE OUTDOOR outside a hotel

And what happens if the mat gets really dirty? It can simply be washed at temperatures up to 40°C. Each mat can be printed with up to 16 colours (including the basic mat colour), which can be chosen from our palette of 17 standard colours.



OD 9010 Bordeaux



OD 9011 Red



OD 9030 Dark Brown



OD 9031 Sand



OD 9032 Natural



OD 9050 Orange



OD 9051 Yellow



OD 9060 Black



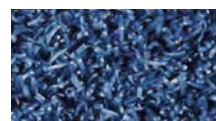
OD 9061 Grey



OD 9062 Licht Grey



OD 9070 Dark Blue



OD 9071 Indigo Blue



OD 9080 Moss green



OD 9081 Light green



OD 9082 Grass green



OD 9083 Petrol Blue














OD 9063 White

Mats (including border) approx. Special dimensions on request  
 85 x 150 cm up to approx. 200 x 400\* cm  
 100 x 180 cm (including border)  
 130 x 200 cm

\* Excess lengths up to approx. 750 cm  
 for an additional charge.

# Technical data

		INNOVA	MAXIMUS® MAXIMUS® IMAGE	PRESTIGE	CONFORM	CONFORM TILES	CONFORM SE
Manufacturing process	ISO 2424	tufted	tufted	tufted	tufted	tufted	tufted
Gauge	ISO 2424	5/32"	1/8"	1/8"	1/8"	1/8"	1/8"
Pile material	ISO 2424	100 % PA 6	100 % PA 6.6	100 % PA 6	100 % PA 6	100 % PA 6	100 % PA 6
Substrate material	ISO 2424	Polyester fleece	Polyester fleece	Polyester fleece	Polyester fleece	—	Polyester fleece
Backing material	ISO 2424	Heavy coating	Heavy coating	Heavy coating	Heavy coating	Bitumen	Synthetic latex
Pile weight	ISO 8543	approx. 885 g/m²	approx. 1.000 g/m²	approx. 975 g/m²	approx. 1.200 g/m²	approx. 1.200 g/m²	approx. 1.200 g/m²
Total weight	ISO 8543	approx. 3.460 g/m²	approx. 3.410 g/m²	approx. 3.560 g/m²	approx. 3.820 g/m²	approx. 4.280 g/m²	approx. 2.400 g/m²
Pile height	ISO 1766	approx. 5,0 mm	approx. 6,5 mm	approx. 5,0 mm	approx. 6,0 mm	approx. 6,5 mm	approx. 5,0 mm
Total mat height	ISO 1765	approx. 8,0 mm	approx. 9,0 mm	approx. 8,0 mm	approx. 9,0 mm	approx. 9,0 mm	approx. 8,5 mm
Pile density	ISO 1763	approx. 75.590/m²	approx. 138.600/m²	approx. 141.730/m²	approx. 132.280/m²	approx. 132.280/m²	approx. 132.280/m²
Resilience value	EN 1307	33	33	32	33	33	33
Comfort class	EN 1307	LC3	LC4	LC4	LC4	LC4	LC4
Suitable for castor chairs	EN 985	yes	yes	yes	yes	yes	yes
Suitable for stairs	EN 1307	yes	yes	yes	yes	yes	yes
Fastness to light	ISO 105-B02	≥ 5	≥ 5	≥ 5	—	—	—
Fastness to rubbing dry & wet	ISO 105-X12	≥ 4	≥ 4	≥ 4	—	—	—
Fastness to water	ISO 105-E01	≥ 4	≥ 4	≥ 4	—	—	—
Electrostatic charge	ISO 6356	< 2 kV	< 2 kV	< 2 kV	< 2 kV	< 2 kV	< 2 kV
Slip resistance	EN 13893	DS	DS	DS	DS	DS	DS
Flammability	EN 13501-1	C <sub>fl</sub> -s1	B <sub>fl</sub> -s1	C <sub>fl</sub> -s1	C <sub>fl</sub> -s1	B <sub>fl</sub> -s1	C <sub>fl</sub> -s1
CE Marking EN 14041 (rolls and cut length only)							

		PREMIUM	CARE	FOCUS	SCRATCH	CONTURA
Manufacturing process	ISO 2424	tufted	tufted	tufted	tufted	woven 2-Chorig
Gauge	ISO 2424	5/32"	5/32"	5/32"	5/32"	—
Pile material	ISO 2424	100 % PA 6	100 % PA 6	100 % PA 6	100 % PA 6	100 % PA 6
Substrate material	ISO 2424	Polyester fleece	Polyester fleece	Polyester fleece	Polyester fleece	PES, PP, CO, CV
Backing material	ISO 2424	Heavy coating	Heavy coating	Heavy coating	Heavy coating	Ethylene vinyl acetate
Pile weight	ISO 8543	approx. 2.050 g/m²	approx. 1.005 g/m²	approx. 1.030 g/m²	approx. 1.150 g/m²	approx. 750 g/m²
Total weight	ISO 8543	approx. 4.670 g/m²	approx. 3.650 g/m²	approx. 3.450 g/m²	approx. 3.820 g/m²	approx. 1.900 g/m²
Pile height	ISO 1766	approx. 9,0 mm	approx. 4,0 mm	approx. 7,0 mm	approx. 6,0 mm	approx. 4,0 mm
Total mat height	ISO 1765	approx. 11,0 mm	approx. 7,5 mm	approx. 9,0 mm	approx. 9,0 mm	approx. 7,0 mm
Pile density	ISO 1763	approx. 76.000/m²	approx. 73.100/m²	approx. 73.000/m²	approx. 67.500/m²	approx. 90.000/m²
Resilience value	EN 1307	33	33	33	33	32
Comfort class	EN 1307	LC4	LC3	LC3	LC2	LC1
Suitable for castor chairs	EN 985	yes	yes	yes	yes	no
Suitable for stairs	EN 1307	yes	yes	no	yes	no
Fastness to light	ISO 105-B02	≥ 7	≥ 5	≥ 5	≥ 7	≥ 5
Fastness to rubbing dry & wet	ISO 105-X12	≥ 4	≥ 4	≥ 4	≥ 4	≥ 3–4
Fastness to water	ISO 105-E01	≥ 4	≥ 4	≥ 4	≥ 4	≥ 4
Electrostatic charge	ISO 6356	< 2 kV	< 2 kV	< 2 kV	< 2 kV	< 2 kV
Slip resistance	EN 13893	DS	DS	DS	DS	DS
Flammability	EN 13501-1	C <sub>fl</sub> -s1	C <sub>fl</sub> -s1	B <sub>fl</sub> -s1	C <sub>fl</sub> -s1	C <sub>fl</sub> -s1
CE Marking EN 14041 (rolls and cut length only)						



# PLANNING

Part of the planning of interiors is to identify the critical areas that are prone to staining. These areas that are at risk of damage by dirt exist in all public buildings, in offices and production areas and in private houses. Everywhere where people come and go frequently.



# APPLICATION AREAS



Clean-off acts as an elegant guiding path through an office building

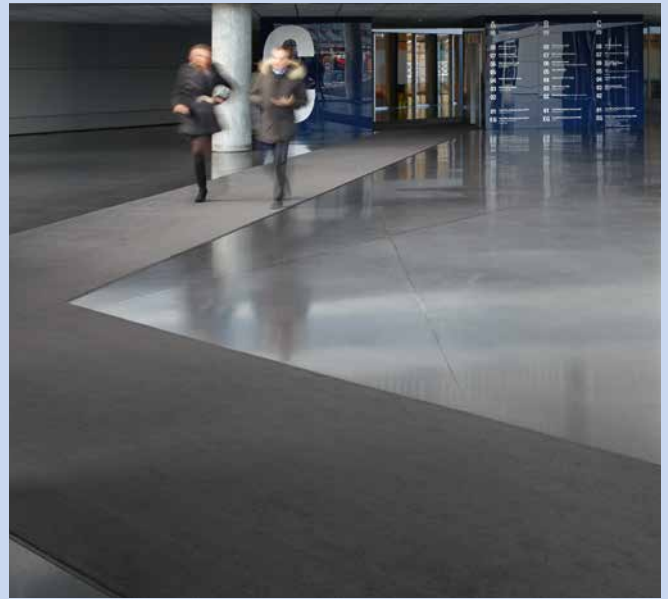
# 100 running metres of non-stop clean-off through the Deichtorcenter

The Deichtorcenter in Hamburg – the linking element between the Kontorhaus and Speicherstadt districts and the HafenCity quarter. Designed as a gigantic glass ship, the architectural landmark creates a sense of magnitude – starting with a clean-off which boasts impressive dimensions.





The high-quality MAXIMUS® clean-off also provides effective protection against dirt and moisture for the adjacent rooms.



MAXIMUS® prevents wet or greasy areas from forming on the stone floor, thereby reducing the risk of accidents.

### High tech combined with emotion, cleanliness and safety

Built between 2000 and 2002, the impressive, high-tech office building was designed by Hadi Teherani's team of architects and won the BDA architecture prize in 2005. Its high standards are based on the pillars of cleanliness and safety. And that starts with the clean-off. In total, 100 running metres of the MAXIMUS® premium product cut across the entire building between the two main entrances and up to the lifts. On this scale, the clean-off can really show itself off and demonstrate all of its strengths.

### A clean-off just makes dirt disappear

... while always looking its best. A MAXIMUS® clean-off in a dignified, solid black shade welcomes visitors to the Deichtorcenter. This clean-off, made from high-quality, tufted velour, is designed for especially high traffic areas and meets the highest standards of comfort. It absorbs dirt and moisture and acts as the perfect „receptionist“ in the entrance area of the Deichtorcenter. At the same time, it ensures visitors' safety by helping to prevent slips on wet or greasy areas of the stone floor and in adjacent rooms.



An office concept for the 21st century by the architectural firm BRT Architekten – Bothe, Richter, Teherani.

Building:	Deichtorcenter Hamburg
Clean-off:	MAXIMUS®
Quantity:	200 m <sup>2</sup>
Colour:	80.01 Black
Laying:	bonded



# PREMIUM performs in front of 2000 visitors every day

The Stage “Theater at the Elbe” in Hamburg demonstrates the prominent role that a full-surface clean-off can play in a building: PREMIUM is the star turn in the entrance area with its dual cleanliness and safety function.



The entrance area of the “Theater at the Elbe”, currently showing the musical “The Miracle of Bern”, is fitted with the PREMIUM clean-off.

### Clean-off: the star turn

Hamburg is Germany's musical theatre capital, and one of its top venues is the Stage "Theater at the Elbe", situated in the heart of the harbour district, with its PREMIUM clean-off. This clean-off gives an idea of what can really be achieved under tough conditions, providing cleanliness and safety for around 2000 visitors every day. At 130 m<sup>2</sup>, it covers the entire entrance area. In a distinguished black shade and with its dirt-concealing properties, PREMIUM is a key part of the room's sophisticated design and is more than a match for the heavy traffic it is exposed to.

### Cost-effective and safe, distinguished and durable

Around 90 % of all cleaning costs are down to dirt and moisture brought in from outside! PREMIUM, with its specially developed fibres, absorbs around 65 % of the dirt and around 90 % of the moisture. When it is used to cover the entire surface, this adds up to some serious savings. And above all, it's an indispensable safety feature! Hamburg is famous for its bad weather, but PREMIUM minimises the risk of slippages caused by moisture brought in from outside.



The "Theater at the Elbe" in the harbour district is one of many theatres in Hamburg – the third largest musical city in the world.

Building:	Stage Theater an der Elbe, Hamburg
Clean-off:	PREMIUM
Quantity:	130 m <sup>2</sup>
Colour:	75.11 Black
Laying:	bonded

The PREMIUM clean-off in black: a real eye-catcher for around 2000 visitors every day.





# Clean architectural design

When it comes to building planning, clean-off coverings are often unfairly treated as the poor relation by architects. A modern clean-off distinguishes itself as a key component of contemporary architectural concepts in many respects.

Who knew perfect dirt prevention could look so good? Clean-off zone indoors and outdoors.



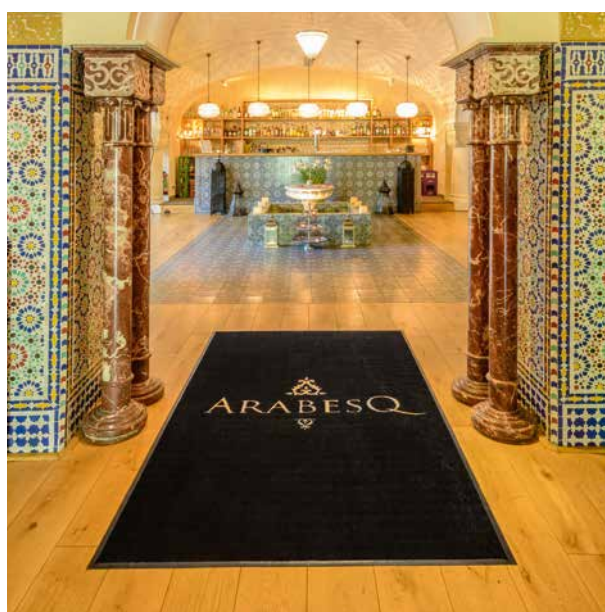
Modern clean-off coverings are not just there to minimise the amount of dirt and moisture carried into living and working spaces. When used correctly, they also serve as a distinguished, perfectly integrated element of a room's overall appearance. They are an effective safety feature, they are proven to reduce cleaning costs and they also serve as an indispensable design element. A particularly successful example can be found in the Grafenberg district of Düsseldorf, in the Arabic speciality restaurant ArabesQ. This architectural landmark, which was built almost 120 years ago in the Gothic Revival style, is a perfect oasis of Eastern hospitality while also representing the latest in interior planning.

### Functional yet elegant symbols

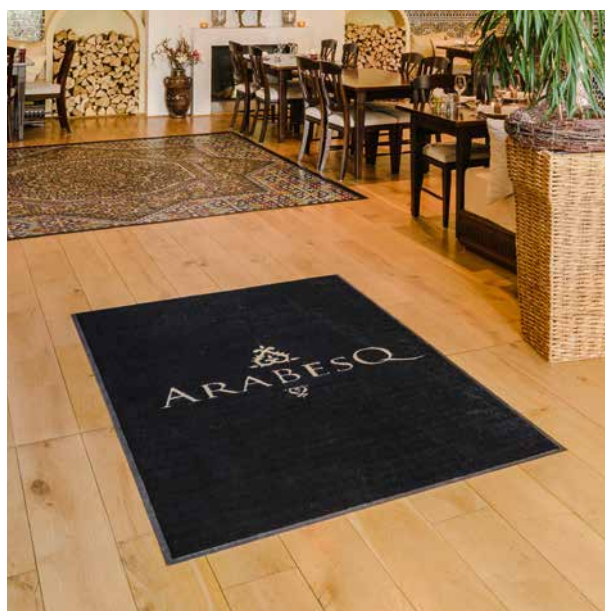
When visitors arrive at the restaurant, they are greeted by a product that draws them inside. IMAGE OUTDOOR is a functional logo mat which, at the same time, serves as an elegant symbol of the restaurant itself. Equipped with drainage holes to drain away moisture, it reaches its full potential in rainy seasons. When entering the interior, visitors pass over a MAXIMUS® IMAGE clean-off which, like the outdoor mat, displays the golden logo of the restaurant on a black background. ArabesQ managing director Nina Brandon: „It wasn't just the functional benefits that appealed to us. We particularly wanted to be able to design our clean-off in the style of the restaurant.“



ArabesQ restaurant in the Grafenberg district of Düsseldorf: an architectural landmark in the Gothic Revival style.



Function and design: The clean-off is an integral part of the interior design.



The highest standards require the utmost care: A clean-off zone absorbs up to 90% of dirt and moisture.

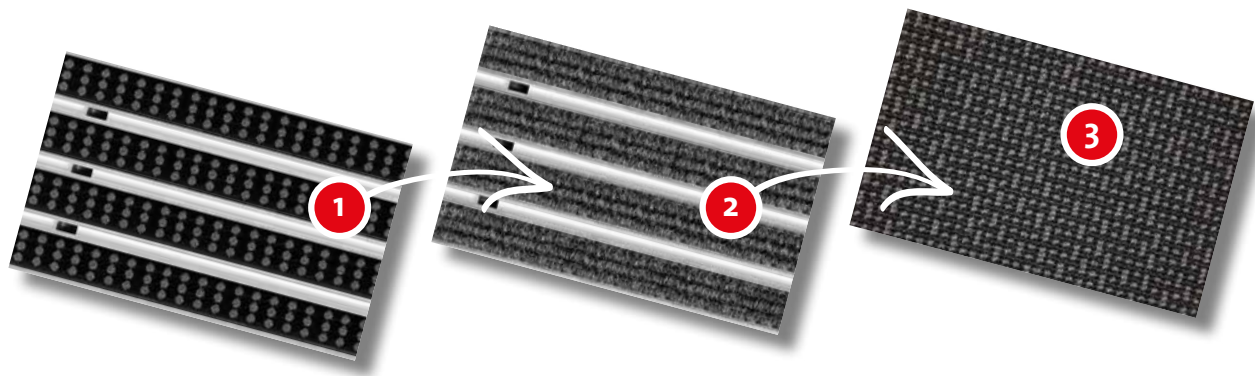
Building:	Restaurant ArabesQ, Düsseldorf
Clean-off:	IMAGE OUTDOOR and MAXIMUS® IMAGE
Quantity:	130 x 200 cm
Colour:	OD 9060 Black + OD 9051 Yellow i390 Black + i420 Gold
Laying:	loose



# 3-zone cleaning

Through the combination of emco aluminium profile mats with different thicknesses and inserts and the large-area clean-off floor coverings, the 3-zone cleaning system protects the building from virtually all soiling as people walk across it.





#### Zone 1

##### Coarse dirt



Coarse dirt is brushed off in zone 1 thanks to rubber or cassette-brush inserts. Inside and out. With certified non-slip properties.

#### Zone 2

##### Fine dirt



Ribbed carpet inserts for the removal of fine dirt. The non-slip insert material can be used in indoor areas and in covered outdoor areas.

#### Zone 3

##### Damp dirt and remaining moisture



Inside buildings, non-slip clean-off floor coverings are extremely effective at absorbing moisture and residual dirt, thereby preventing footprints.

### Easy to clean

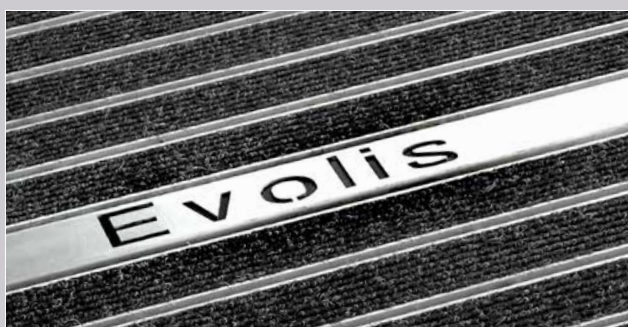


The functional inserts provide efficient long-term dirt removal, since the dirt is collected in the gaps and moisture is absorbed.



The mats can be rolled up, allowing dirt to be removed from the matwell with the utmost ease.

### Additional stainless steel profiles



emco INOX® LINEO – upgrade your entrance with lettering in a stainless steel profile. The text is laser-cut into a high-quality stainless steel profile, which is permanently integrated in the emco entrance mat system.



emco INOX® QUADRO – stainless steel profile with individual lettering, with a prestigious logo plate for effective promotion in entrance mat systems. Special colours for your personal logo are possible.



# Cleaning and maintenance recommendations

To enable your clean-off product to perform long term and provide the best possible dirt holding capacity, please note the following instructions.

## 1. General cleaning

We recommend daily cleaning to include spot cleaning, the frequency depends on the number of people visiting the building. We recommend a powerful rotary brush vacuum cleaner. This type of vacuum cleaners remove the dirt right down to the substrate. The brushes also lift the pile upright again and keep the clean-off zone “open” to new dirt. Do not use a suction only vacuum cleaner, since only a brush vacuum cleaner can remove the dirt that accumulates at the base of the fibre.

## 2. Intermediate cleaning

The spray extraction method is perfect for periodic cleaning of your clean-off zone. Remove loosely adhering dirt with the brush vacuum cleaner. Then water is injected under high pressure (where required, with the addition of a detergent) into the clean-off zone carpet and subsequently sucked out removing the diluted dirt, be sure to remove any remaining detergent by finishing with a warm water only spray extraction. Note – a build up of detergent remaining in the carpet can attract dirt.

Can intensive cleaning your emco clean-off zone cause damage? No. Because the specially developed yarn construction, the robust quality inks and the waterproof backing have all been designed for frequent and intensive cleaning.

## 3. Thorough cleaning

At certain intervals – depending on the footfall in the clean-off zone – thorough cleaning is necessary. First of all, vacuum up the loose dirt with a brush type vacuum cleaner and then shampoo with a contra-rotating 3-disc machine. Immediately afterwards, use a water extraction machine to remove the loose dirt and remaining water. Finish by going over the area with the water extraction machine using clean warm water and leave to dry, then vacuum once more to bring the pile back upright, ready to

carry on performing. Note – if the mat is put back to work while wet, the damp surface will wash the bottom of the foot and transfer the dirt quickly back into the carpet and it will look dirty very fast. Use a neutral detergent to rinse away grease, oil or chemicals in lukewarm water.

## 4. Cleaning with high pressure

When high-pressure cleaning, the mat should first be removed completely. Hang it up in a convenient location – and you can then go to work with a commercial pressure washer. Make sure that you keep the nozzle of the high-pressure cleaner a sufficient distance away from the clean-off in order to prevent damage. Ideally, keep the clean-off mat hanging up until it is completely dry.

## 5. Scrubbing

Please note, only suitable for fully bonded clean-off zone installations. Is your clean-off zone extremely dirty? Then it's time to use a scrubbing machine! Again, first of all start cleaning with a brush vacuum cleaner. Stubborn dirt (e.g. fats or oils) require regular spot cleaning using a recommended cleaner followed up by scrubbing at frequent intervals.

## 6. Stain removal

Stains must be treated as soon as possible as certain substances can cause lasting damage to fibres and colours. How quickly you act will determine how successfully the mat can be cleaned. Almost 80% of all fresh stains can be removed with clean water. Sponge off liquid substances with a terry towel. Concentrated, dried-in substances must be removed (e.g. with a scraper) and brushed off. Water-soluble stains should be re-moistened with water and sponged off. Make sure that you sponge off the stains and do not rub them further into the material. Always work from the outside in to avoid making the stains larger. Repeat this process if necessary.

**If you are not able to remove stubborn stains with this method, we recommend seeking advice on stains from James B.V. at: [www.james.eu/en/](http://www.james.eu/en/)**

### Attention!

Never use solvents based on chlorinated hydrocarbons (tetrachloride)!

### Attention!

clean-off products must never be washed in the washing machine!\*

In the case of clean-off tiles, a wet cleaning method should only be used with caution as water could get into the many seams.

# Laying instructions

## 1. Background

You can lay Clean-off on any prepared surface – provided the surface is solid, stable, permanently dry, flat and free of surface contaminants, for example: oil, grease or old adhesives. Please note: Relevant national regulations apply to this work, in particular: DIN 18 365 “Flooring work”, DIN 18 299 “General rules applying to all types of construction work”, DIN 18 202, “Tolerances in building construction – Buildings.” In Austria, the following apply: ÖNORM B 2232 “Floor topping – Works contract”, ÖNORM B 2236 “Laying of floor coverings – Works contract” and 18 202 “Tolerances in building construction – Buildings”. The following standards apply in Switzerland: SIA Standard 251 (floating floors in interiors)/SIA Standard 253 (floor coverings made from linoleum, plastic, rubber, cork, textiles and wood). Note also the requirements of the BEB (Federal Association of Screed and Floor Covering) data sheet “Assessment and preparation of substrates - heated and unheated floor constructions”.

Note also the requirements of the BEB (Federal Association of Screed and Floor Covering) data sheet “Assessment and preparation of substrates – heated and unheated floor constructions”. For laying in rooms with no cellar, the substrates in contact with the ground must be sealed on site in accordance with standards for rising damp.

## 2.1 Laying rolls and mats

All rolls should be laid according to the direction of the arrows on the rear-side coating and in the direction of the primary light source. Seam joints are cut in a double cut or in a single cut from the back. All clean-off rolls must be bonded individually in the same direction to form a continuous surface. Only rolls from the same batch may be laid next to each other. To avoid problems regarding a possible colour fade, only the outer edges should be placed next to each other. To avoid complaints, we recommend discussing the laying direction, seams and offcuts with

the client before laying. Individual rolls or smaller surfaces up to 6 m<sup>2</sup> and mats can be laid loose.

## 2.2 Laying on stairs

When laying clean-off systems on stairs, the edges of the stairs must be rounded rather than sharp. The radius of the rounding should correspond approximately to that of a 2-euro coin (radius approx. 1.3 cm) – and must not be less than 1.0 cm. For continuous laying on treads and risers, only use products with synthetic latex coating. Where the steps have to be covered completely, always use a contact adhesive to prevent the covering shearing away from the tread edge. Make sure that the rear side of the covering is sufficiently roughened for this purpose. The clean-off should be laid step by step from bottom to top. The step may only be walked on after the adhesive has been completely cured (in accordance with the manufacturer's instructions).

## 3. Bonding

Only use suitable dispersion adhesives. Bonding with double-sided adhesive tape is only permitted with “Sigan Elements” and “Sigan Elements Plus”. Where increased or permanent water absorption is expected (e.g. in entrance areas), 2K adhesives should be used. The synthetic latex coating is generally applied with a suitable adhesive across the entire surface. During processing, the guidelines of the manufacturer should be followed.

---

**Note:** All information and data in this brochure is correct to the best of our knowledge at the time of printing. We can accept no liability for incomplete, incorrect or unusable information in individual cases. Any differences in the colour of the patterns from the original colour are attributable to the printing process. We cannot accept any claims resulting from such differences. Subject to technical modifications. (As of 01/2017)

In the case of velours, in rare cases, permanent shading may occur. As the cause of such shading is not due to the material or its design, and it remains fit for purpose, we cannot offer any guarantees in such cases.

\* except IMAGE INDOOR and IMAGE OUTDOOR

### Attention!

The product must be bonded securely to ensure dimensional stability!



emco Bau- und Klimatechnik GmbH & Co. KG Postfach 1860 D-49803 Lingen (Ems) Germany Tel. +49 (0) 591 9140-0 Fax +49 (0) 591 9140-852 bau@emco.de	emco UK Ltd 5 Plough Road Wellington Telford TF1 1ET Tel. (+44) 01952 256446 Fax (+44) 01952 262940 enquiries@emcouk.co.uk
---	---

[www.emco-bau.com](http://www.emco-bau.com)

**Toveri Pals** General Trading Company Kuwait,  
Shuwaikh, Free Trade Zone, Block 1, Plot 35, 2nd Floor.  
Tel: +965 5664-7575 / 76  
P.O. Box: 5711, Safat. Kuwait 13058 E:  
[info@toveripals.com](mailto:info@toveripals.com)  
[www.toveripals.com](http://www.toveripals.com)

A member of the  **EMCO**  
Group

